

# HRT Series Technical Specifications

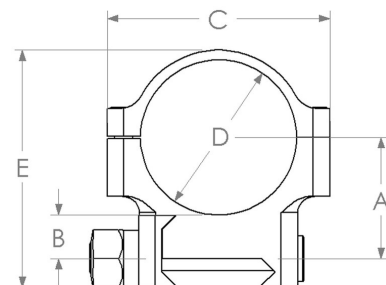
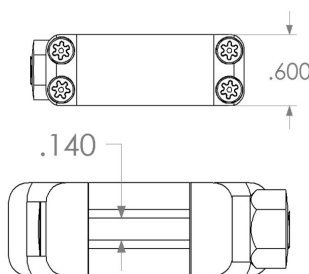
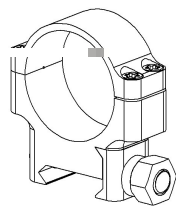
## Product Highlights

Operating System	Scope Rings, Sniper, Tactical; Standardized Weaver® Rail platform.
Locking System	Slot and spline design, Weaver® style cross-slot configuration.
Hardware Features	Machined from solid billet. Bores of both base and cap of each scope ring is maintained within 2/10,000 of an inch cylindrical roundness. Ring bases are marked for easy identification of each height. Field and Armory replaceable cross-bolt & clamp design. Torx® SHCS fasteners on ring caps (6-40) x (4) per ring.
Protective Coatings	Alloy steel, bead blasted (AH) diameter, finished with black oxide to Mil-C-13924; Aluminum Alloy, bead blasted (AH) diameter, finished hard anodized to Type III per Mil-A-8624; Stainless Steel, bead blasted (AH) diameter, passivated to ASTM A 967 Type III.
Precision & Tolerance	Bore size held within +/- .0002 of nominal dimension. Base sectional height held within +/- .0005 of nominal dimension. Perpendicularity and parallelism between ring bore-line and base held within +/- .0002 of true position.
Cross-Bolt System	True square cross-bolt, full width base engagement, bolt width (.140), bolt depth (.095), 4140 HT alloy, 1/4-28 TPI (Class IIA), cold formed threads; Hexagon (7/16) nut drive, cold formed threads, 4140 HT alloy, bead blasted, finished with black oxide to Mil-C-13924; Stainless Steel models use 416 HT alloy on cross-bolt and hexagon nut with respective threads, bead blasted, passivated to ASTM A 967 Type III.

<b>Alloy Steel</b>	1-Inch Height (Low)	1-Inch Height (Medium)	1-Inch Height (High)	1-Inch Height (X-High)
SKU Number	40500	40501	40502	40525
Ring Height	"A" (.785) {19.9mm}	"A" (.985) {25mm}	"A" (1.185) {30mm}	"A" (1.400) {35.5mm}
Base Sectional Height	"B" (.285) {7.23mm}	"B" (.485) {12.3mm}	"B" (.685) {17.4mm}	"B" (.900) {22.8mm}
Overall Length	"C" (1.500) {38.1mm}	"C" (1.500) {38.1mm}	"C" (1.500) {38.1mm}	"C" (1.500) {38.1mm}
Bore Size	"D" (1.0005) {25.4mm}	"D" (1.0005) {25.4mm}	"D" (1.0005) {25.4mm}	"D" (1.0005) {25.4mm}
Overall Height	"E" (1.585) {40.3mm}	"E" (1.785) {45.3mm}	"E" (1.985) {50.4mm}	"E" (2.200) {55.9mm}
Weight	5.25 oz./pair	6.21 oz./pair	7.17 oz./pair	7.74 oz./pair

<b>Aluminum (7075)</b>	1-Inch Height (Low)	1-Inch Height (Medium)	1-Inch Height (High)	1-Inch Height (X-High)
SKU Number	40520	40521	40522	40526
Ring Height	"A" (.785) {19.9mm}	"A" (.985) {25mm}	"A" (1.185) {30mm}	"A" (1.400) {35.5mm}
Base Sectional Height	"B" (.285) {7.23mm}	"B" (.485) {12.3mm}	"B" (.685) {17.4mm}	"B" (.900) {22.8mm}
Overall Length	"C" (1.500) {38.1mm}	"C" (1.500) {38.1mm}	"C" (1.500) {38.1mm}	"C" (1.500) {38.1mm}
Bore Size	"D" (1.0005) {25.4mm}	"D" (1.0005) {25.4mm}	"D" (1.0005) {25.4mm}	"D" (1.0005) {25.4mm}
Overall Height	"E" (1.585) {40.3mm}	"E" (1.785) {45.3mm}	"E" (1.985) {50.4mm}	"E" (2.200) {55.9mm}
Weight	2.72 oz./pair	3.18 oz./pair	3.64 oz./pair	4.72 oz./pair

<b>Stainless Steel</b>	1-Inch Height (Low)	1-Inch Height (Medium)	1-Inch Height (High)	1-Inch Height (X-High)
SKU Number	40503	40504	40505	40527
Ring Height	"A" (.785) {19.9mm}	"A" (.985) {25mm}	"A" (1.185) {30mm}	"A" (1.400) {35.5mm}
Base Sectional Height	"B" (.285) {7.23mm}	"B" (.485) {12.3mm}	"B" (.685) {17.4mm}	"B" (.900) {22.8mm}
Overall Length	"C" (1.500) {38.1mm}	"C" (1.500) {38.1mm}	"C" (1.500) {38.1mm}	"C" (1.500) {38.1mm}
Bore Size	"D" (1.0005) {25.4mm}	"D" (1.0005) {25.4mm}	"D" (1.0005) {25.4mm}	"D" (1.0005) {25.4mm}
Overall Height	"E" (1.585) {40.3mm}	"E" (1.785) {45.3mm}	"E" (1.985) {50.4mm}	"E" (2.200) {55.9mm}
Weight	5.26 oz./pair	6.23 oz./pair	7.19 oz./pair	7.77 oz./pair



HRT

1-INCH