

TSR Series Technical Specifications

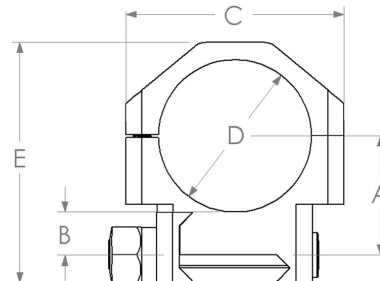
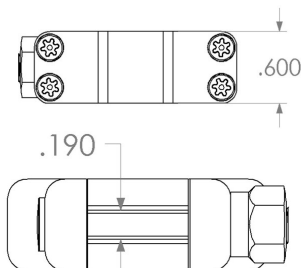
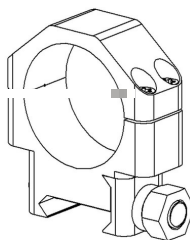
Product Highlights

Operating System	Scope Rings, Sniper, Tactical; Standardized Picatinny Rail (Mil-STD 1913) platform.
Locking System	Slot and spline design, Picatinny (Mil-STD 1913) configuration.
Hardware Features	Machined from solid billet. Bores of both base and cap of each scope ring is maintained within 2/10,000 of an inch cylindrical roundness. Ring bases are marked for easy identification of each height. Field and Armory replaceable cross-bolt & clamp design. Torx® SHCS fasteners on ring caps (6-40) x (4) per ring.
Protective Coatings	Alloy steel, bead blasted (AH) diameter, finished with black oxide to Mil-C-13924; Aluminum Alloy, bead blasted (AH) diameter, finished hard anodized to Type III per Mil-A-8624; Stainless Steel, bead blasted (AH) diameter, passivated to ASTM A 967 Type III.
Precision & Tolerance	Bore size held within +/- .0002 of nominal dimension. Base sectional height held within +/- .0005 of nominal dimension. Perpendicularity and parallelism between ring bore-line and base held within +/- .0002 of true position.
Cross-Bolt System	True square cross-bolt, full width base engagement, bolt width (.190), bolt depth (.120), 4140 HT alloy, 1/4-28 TPI (Class IIA), cold formed threads; Hexagon (7/16) nut drive, cold formed threads, 4140 HT alloy, bead blasted, finished with black oxide to Mil-C-13924; Stainless Steel models use 416 HT alloy on cross-bolt and hexagon nut with respective threads, bead blasted, passivated to ASTM A 967 Type III.

Alloy Steel	1-Inch Height (Low)	1-Inch Height (Medium)	1-Inch Height (High)	1-Inch Height (X-High)
SKU Number	30500	30501	30502	30525
Ring Height	"A" (.785) {19.9mm}	"A" (.985) {25mm}	"A" (1.185) {30mm}	"A" (1.400) {35.5mm}
Base Sectional Height	"B" (.285) {7.23mm}	"B" (.485) {12.3mm}	"B" (.685) {17.4mm}	"B" (.900) {22.8mm}
Overall Length	"C" (1.500) {38.1mm}	"C" (1.500) {38.1mm}	"C" (1.500) {38.1mm}	"C" (1.500) {38.1mm}
Bore Size	"D" (1.0005) {25.4mm}	"D" (1.0005) {25.4mm}	"D" (1.0005) {25.4mm}	"D" (1.0005) {25.4mm}
Overall Height	"E" (1.710) {43.4mm}	"E" (1.910) {48.5mm}	"E" (2.110) {53.6mm}	"E" (2.325) {59mm}
Weight	5.75 oz./pair	6.71 oz./pair	7.67 oz./pair	8.24 oz./pair

Aluminum (7075)	1-Inch Height (Low)	1-Inch Height (Medium)	1-Inch Height (High)	1-Inch Height (X-High)
SKU Number	30520	30521	30522	30526
Ring Height	"A" (.785) {19.9mm}	"A" (.985) {25mm}	"A" (1.185) {30mm}	"A" (1.400) {35.5mm}
Base Sectional Height	"B" (.285) {7.23mm}	"B" (.485) {12.3mm}	"B" (.685) {17.4mm}	"B" (.900) {22.8mm}
Overall Length	"C" (1.500) {38.1mm}	"C" (1.500) {38.1mm}	"C" (1.500) {38.1mm}	"C" (1.500) {38.1mm}
Bore Size	"D" (1.0005) {25.4mm}	"D" (1.0005) {25.4mm}	"D" (1.0005) {25.4mm}	"D" (1.0005) {25.4mm}
Overall Height	"E" (1.710) {43.4mm}	"E" (1.910) {48.5mm}	"E" (2.110) {53.6mm}	"E" (2.325) {59mm}
Weight	2.76 oz./pair	3.22 oz./pair	3.68 oz./pair	4.12 oz./pair

Stainless Steel	1-Inch Height (Low)	1-Inch Height (Medium)	1-Inch Height (High)	1-Inch Height (X-High)
SKU Number	30503	30504	30505	30527
Ring Height	"A" (.785) {19.9mm}	"A" (.985) {25mm}	"A" (1.185) {30mm}	"A" (1.400) {35.5mm}
Base Sectional Height	"B" (.285) {7.23mm}	"B" (.485) {12.3mm}	"B" (.685) {17.4mm}	"B" (.900) {22.8mm}
Overall Length	"C" (1.500) {38.1mm}	"C" (1.500) {38.1mm}	"C" (1.500) {38.1mm}	"C" (1.500) {38.1mm}
Bore Size	"D" (1.0005) {25.4mm}	"D" (1.0005) {25.4mm}	"D" (1.0005) {25.4mm}	"D" (1.0005) {25.4mm}
Overall Height	"E" (1.710) {43.4mm}	"E" (1.910) {48.5mm}	"E" (2.110) {53.6mm}	"E" (2.325) {59mm}
Weight	5.76 oz./pair	6.73 oz./pair	7.69 oz./pair	8.27 oz./pair



TSR

1-INCH

TSR Series Technical Specifications

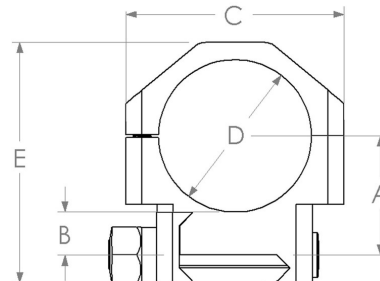
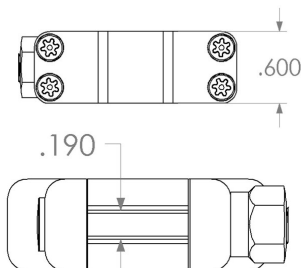
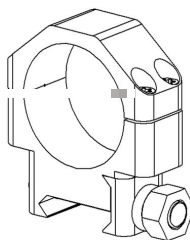
Product Highlights

Operating System	Scope Rings, Sniper, Tactical; Standardized Picatinny Rail (Mil-STD 1913) platform.
Locking System	Slot and spline design, Picatinny (Mil-STD 1913) configuration.
Hardware Features	Machined from solid billet. Bores of both base and cap of each scope ring is maintained within 2/10,000 of an inch cylindrical roundness. Ring bases are marked for easy identification of each height. Field and Armory replaceable cross-bolt & clamp design. Torx® SHCS fasteners on ring caps (6-40) x (4) per ring.
Protective Coatings	Alloy steel, bead blasted (AH) diameter, finished with black oxide to Mil-C-13924; Aluminum Alloy, bead blasted (AH) diameter, finished hard anodized to Type III per Mil-A-8624; Stainless Steel, bead blasted (AH) diameter, passivated to ASTM A 967 Type III.
Precision & Tolerance	Bore size held within +/- .0002 of nominal dimension. Base sectional height held within +/- .0005 of nominal dimension. Perpendicularity and parallelism between ring bore-line and base held within +/- .0002 of true position.
Cross-Bolt System	True square cross-bolt, full width base engagement, bolt width (.190), bolt depth (.120), 4140 HT alloy, 1/4-28 TPI (Class IIA), cold formed threads; Hexagon (7/16) nut drive, cold formed threads, 4140 HT alloy, bead blasted, finished with black oxide to Mil-C-13924; Stainless Steel models use 416 HT alloy on cross-bolt and hexagon nut with respective threads, bead blasted, passivated to ASTM A 967 Type III.

Alloy Steel	26mm Height (Low)	26mm Height (Medium)	26mm Height (High)	26mm Height (X-High)
SKU Number	30540	30541	30542	30565
Ring Height	"A" (.785) {19.9mm}	"A" (.985) {25mm}	"A" (1.185) {30mm}	"A" (1.400) {35.5mm}
Base Sectional Height	"B" (.273) {6.93mm}	"B" (.473) {12mm}	"B" (.673) {17mm}	"B" (.888) {22.5mm}
Overall Length	"C" (1.500) {38.1mm}	"C" (1.500) {38.1mm}	"C" (1.500) {38.1mm}	"C" (1.500) {38.1mm}
Bore Size	"D" (1.0241) {26mm}	"D" (1.0241) {26mm}	"D" (1.0241) {26mm}	"D" (1.0241) {26mm}
Overall Height	"E" (1.710) {43.4mm}	"E" (1.910) {48.5mm}	"E" (2.110) {53.6mm}	"E" (2.325) {59mm}
Weight	5.62 oz./pair	6.58 oz./pair	7.54 oz./pair	8.02 oz./pair

Aluminum (7075)	26mm Height (Low)	26mm Height (Medium)	26mm Height (High)	26mm Height (X-High)
SKU Number	30560	30561	30562	30566
Ring Height	"A" (.785) {19.9mm}	"A" (.985) {25mm}	"A" (1.185) {30mm}	"A" (1.400) {35.5mm}
Base Sectional Height	"B" (.273) {6.93mm}	"B" (.473) {12mm}	"B" (.673) {17mm}	"B" (.888) {22.5mm}
Overall Length	"C" (1.500) {38.1mm}	"C" (1.500) {38.1mm}	"C" (1.500) {38.1mm}	"C" (1.500) {38.1mm}
Bore Size	"D" (1.0241) {26mm}	"D" (1.0241) {26mm}	"D" (1.0241) {26mm}	"D" (1.0241) {26mm}
Overall Height	"E" (1.710) {43.4mm}	"E" (1.910) {48.5mm}	"E" (2.110) {53.6mm}	"E" (2.325) {59mm}
Weight	2.70 oz./pair	3.16 oz./pair	3.62 oz./pair	4.01 oz./pair

Stainless Steel	26mm Height (Low)	26mm Height (Medium)	26mm Height (High)	26mm Height (X-High)
SKU Number	30543	30544	30545	30567
Ring Height	"A" (.785) {19.9mm}	"A" (.985) {25mm}	"A" (1.185) {30mm}	"A" (1.400) {35.5mm}
Base Sectional Height	"B" (.273) {6.93mm}	"B" (.473) {12mm}	"B" (.673) {17mm}	"B" (.888) {22.5mm}
Overall Length	"C" (1.500) {38.1mm}	"C" (1.500) {38.1mm}	"C" (1.500) {38.1mm}	"C" (1.500) {38.1mm}
Bore Size	"D" (1.0241) {26mm}	"D" (1.0241) {26mm}	"D" (1.0241) {26mm}	"D" (1.0241) {26mm}
Overall Height	"E" (1.710) {43.4mm}	"E" (1.910) {48.5mm}	"E" (2.110) {53.6mm}	"E" (2.325) {59mm}
Weight	5.73 oz./pair	6.68 oz./pair	7.64 oz./pair	8.15 oz./pair



TSR

26MM

TSR Series Technical Specifications

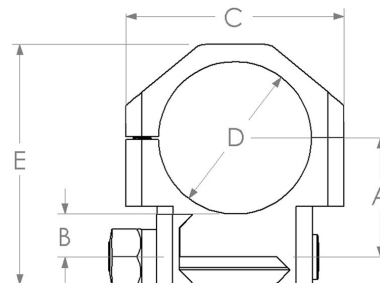
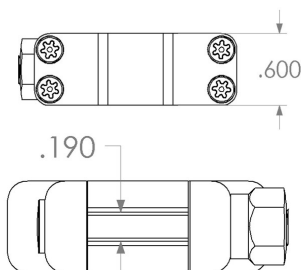
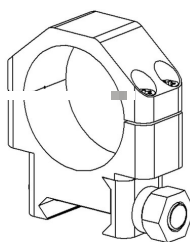
Product Highlights

Operating System	Scope Rings, Sniper, Tactical; Standardized Picatinny Rail (Mil-STD 1913) platform.
Locking System	Slot and spline design, Picatinny (Mil-STD 1913) configuration.
Hardware Features	Machined from solid billet. Bores of both base and cap of each scope ring is maintained within 2/10,000 of an inch cylindrical roundness. Ring bases are marked for easy identification of each height. Field and Armory replaceable cross-bolt & clamp design. Torx® SHCS fasteners on ring caps (6-40) x (4) per ring.
Protective Coatings	Alloy steel, bead blasted (AH) diameter, finished with black oxide to Mil-C-13924; Aluminum Alloy, bead blasted (AH) diameter, finished hard anodized to Type III per Mil-C-13924; Stainless Steel, bead blasted (AH) diameter, passivated to ASTM A 967 Type III.
Precision & Tolerance	Bore size held within +/- .0002 of nominal dimension. Base sectional height held within +/- .0005 of nominal dimension. Perpendicularity and parallelism between ring bore-line and base held within +/- .0002 of true position.
Cross-Bolt System	True square cross-bolt, full width base engagement, bolt width (.190), bolt depth (.120), 4140 HT alloy, 1/4-28 TPI (Class IIA), cold formed threads; Hexagon (7/16) nut drive, cold formed threads, 4140 HT alloy, bead blasted, finished with black oxide to Mil-C-13924; Stainless Steel models use 416 HT alloy on cross-bolt and hexagon nut with respective threads, bead blasted, passivated to ASTM A 967 Type III.

Alloy Steel	30mm Height (Low)	30mm Height (Medium)	30mm Height (High)	30mm Height (X-High)
SKU Number	30570	30571	30572	30585
Ring Height	"A" (.925) {23.5mm}	"A" (1.075) {27.3mm}	"A" (1.225) {31.1mm}	"A" (1.375) {34.9mm}
Base Sectional Height	"B" (.3342) {8.49mm}	"B" (.4842) {12.3mm}	"B" (.6342) {16.1mm}	"B" (.7842) {19.9mm}
Overall Length	"C" (1.685) {42.8mm}	"C" (1.685) {42.8mm}	"C" (1.685) {42.8mm}	"C" (1.685) {42.8mm}
Bore Size	"D" (1.1816) {30mm}	"D" (1.1816) {30mm}	"D" (1.1816) {30mm}	"D" (1.1816) {30mm}
Overall Height	"E" (1.885) {47.9mm}	"E" (2.035) {51.7mm}	"E" (2.185) {55.5mm}	"E" (2.335) {59.3mm}
Weight	6.37 oz./pair	7.08 oz./pair	7.79 oz./pair	8.64 oz./pair

Aluminum (7075)	30mm Height (Low)	30mm Height (Medium)	30mm Height (High)	30mm Height (X-High)
SKU Number	30580	30581	30582	30586
Ring Height	"A" (.925) {25.5mm}	"A" (1.075) {27.3mm}	"A" (1.225) {31.1mm}	"A" (1.375) {34.9mm}
Base Sectional Height	"B" (.3342) {8.49mm}	"B" (.4842) {12.3mm}	"B" (.6342) {16.1mm}	"B" (.7842) {19.9mm}
Overall Length	"C" (1.685) {42.8mm}	"C" (1.685) {42.8mm}	"C" (1.685) {42.8mm}	"C" (1.685) {42.8mm}
Bore Size	"D" (1.1816) {30mm}	"D" (1.1816) {30mm}	"D" (1.1816) {30mm}	"D" (1.1816) {30mm}
Overall Height	"E" (1.885) {47.9mm}	"E" (2.035) {51.7mm}	"E" (2.185) {55.5mm}	"E" (2.335) {59.3mm}
Weight	3.06 oz./pair	3.40 oz./pair	3.74 oz./pair	4.03 oz./pair

Stainless Steel	30mm Height (Low)	30mm Height (Medium)	30mm Height (High)	30mm Height (X-High)
SKU Number	30573	30574	30575	30587
Ring Height	"A" (.925) {25.5mm}	"A" (1.075) {27.3mm}	"A" (1.225) {31.1mm}	"A" (1.375) {34.9mm}
Base Sectional Height	"B" (.3342) {8.49mm}	"B" (.4842) {12.3mm}	"B" (.6342) {16.1mm}	"B" (.7842) {19.9mm}
Overall Length	"C" (1.685) {42.8mm}	"C" (1.685) {42.8mm}	"C" (1.685) {42.8mm}	"C" (1.685) {42.8mm}
Bore Size	"D" (1.1816) {30mm}	"D" (1.1816) {30mm}	"D" (1.1816) {30mm}	"D" (1.1816) {30mm}
Overall Height	"E" (1.885) {47.9mm}	"E" (2.035) {51.7mm}	"E" (2.185) {55.5mm}	"E" (2.335) {59.3mm}
Weight	6.39 oz./pair	7.17 oz./pair	7.83 oz./pair	8.73 oz./pair



TSR

30MM

TSR "W" Series Technical Specifications

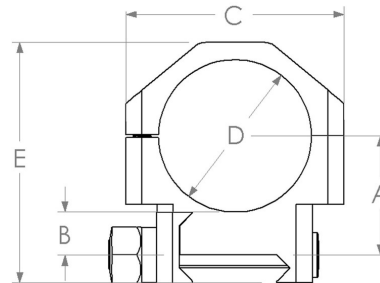
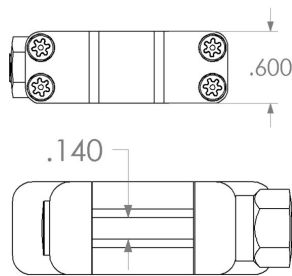
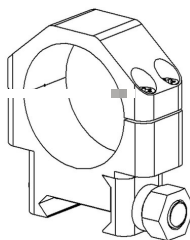
Product Highlights

Operating System	Scope Rings, Sniper, Tactical; Standardized Weaver® Rail platform.
Locking System	Slot and spline design, Weaver® style cross-slot configuration.
Hardware Features	Machined from solid billet. Bores of both base and cap of each scope ring is maintained within 2/10,000 of an inch cylindrical roundness. Ring bases are marked for easy identification of each height. Field and Armory replaceable cross-bolt & clamp design. Torx® SHCS fasteners on ring caps (6-40) x (4) per ring.
Protective Coatings	Alloy steel, bead blasted (AH) diameter, finished with black oxide to Mil-C-13924; Aluminum Alloy, bead blasted (AH) diameter, finished hard anodized to Type III per Mil-A-8624; Stainless Steel, bead blasted (AH) diameter, passivated to ASTM A 967 Type III.
Precision & Tolerance	Bore size held within +/- .0002 of nominal dimension. Base sectional height held within +/- .0005 of nominal dimension. Perpendicularity and parallelism between ring bore-line and base held within +/- .0002 of true position.
Cross-Bolt System	True square cross-bolt, full width base engagement, bolt width (.140), bolt depth (.095), 4140 HT alloy, 1/4-28 TPI (Class IIA), cold formed threads; Hexagon (7/16) nut drive, cold formed threads, 4140 HT alloy, bead blasted, finished with black oxide to Mil-C-13924; Stainless Steel models use 416 HT alloy on cross-bolt and hexagon nut with respective threads, bead blasted, passivated to ASTM A 967 Type III.

Alloy Steel	1-Inch Height (Low)	1-Inch Height (Medium)	1-Inch Height (High)	1-Inch Height (X-High)
SKU Number	30600	30601	30602	30625
Ring Height	"A" (.785) {19.9mm}	"A" (.985) {25mm}	"A" (1.185) {30mm}	"A" (1.400) {35.5mm}
Base Sectional Height	"B" (.285) {7.23mm}	"B" (.485) {12.3mm}	"B" (.685) {17.4mm}	"B" (.900) {22.8mm}
Overall Length	"C" (1.500) {38.1mm}	"C" (1.500) {38.1mm}	"C" (1.500) {38.1mm}	"C" (1.500) {38.1mm}
Bore Size	"D" (1.0005) {25.4mm}	"D" (1.0005) {25.4mm}	"D" (1.0005) {25.4mm}	"D" (1.0005) {25.4mm}
Overall Height	"E" (1.710) {43.4mm}	"E" (1.910) {48.5mm}	"E" (2.110) {53.6mm}	"E" (2.325) {59mm}
Weight	5.75 oz./pair	6.71 oz./pair	7.67 oz./pair	8.24 oz./pair

Aluminum (7075)	1-Inch Height (Low)	1-Inch Height (Medium)	1-Inch Height (High)	1-Inch Height (X-High)
SKU Number	30620	30621	30622	30626
Ring Height	"A" (.785) {19.9mm}	"A" (.985) {25mm}	"A" (1.185) {30mm}	"A" (1.400) {35.5mm}
Base Sectional Height	"B" (.285) {7.23mm}	"B" (.485) {12.3mm}	"B" (.685) {17.4mm}	"B" (.900) {22.8mm}
Overall Length	"C" (1.500) {38.1mm}	"C" (1.500) {38.1mm}	"C" (1.500) {38.1mm}	"C" (1.500) {38.1mm}
Bore Size	"D" (1.0005) {25.4mm}	"D" (1.0005) {25.4mm}	"D" (1.0005) {25.4mm}	"D" (1.0005) {25.4mm}
Overall Height	"E" (1.710) {43.4mm}	"E" (1.910) {48.5mm}	"E" (2.110) {53.6mm}	"E" (2.325) {59mm}
Weight	2.76 oz./pair	3.22 oz./pair	3.68 oz./pair	4.12 oz./pair

Stainless Steel	1-Inch Height (Low)	1-Inch Height (Medium)	1-Inch Height (High)	1-Inch Height (X-High)
SKU Number	30603	30604	30605	30627
Ring Height	"A" (.785) {19.9mm}	"A" (.985) {25mm}	"A" (1.185) {30mm}	"A" (1.400) {35.5mm}
Base Sectional Height	"B" (.285) {7.23mm}	"B" (.485) {12.3mm}	"B" (.685) {17.4mm}	"B" (.900) {22.8mm}
Overall Length	"C" (1.500) {38.1mm}	"C" (1.500) {38.1mm}	"C" (1.500) {38.1mm}	"C" (1.500) {38.1mm}
Bore Size	"D" (1.0005) {25.4mm}	"D" (1.0005) {25.4mm}	"D" (1.0005) {25.4mm}	"D" (1.0005) {25.4mm}
Overall Height	"E" (1.710) {43.4mm}	"E" (1.910) {48.5mm}	"E" (2.110) {53.6mm}	"E" (2.325) {59mm}
Weight	5.76 oz./pair	6.73 oz./pair	7.69 oz./pair	8.27 oz./pair



TSR-W

1-INCH

TSR "W" Series Technical Specifications

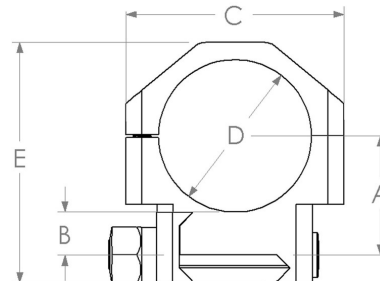
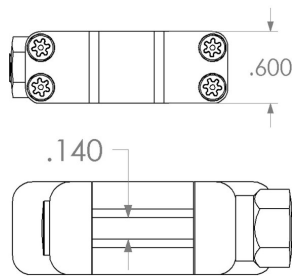
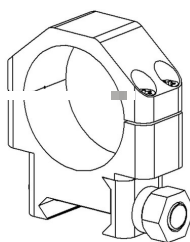
Product Highlights

Operating System	Scope Rings, Sniper, Tactical; Standardized Weaver® Rail platform.
Locking System	Slot and spline design, Weaver® style cross-slot configuration.
Hardware Features	Machined from solid billet. Bores of both base and cap of each scope ring is maintained within 2/10,000 of an inch cylindrical roundness. Ring bases are marked for easy identification of each height. Field and Armory replaceable cross-bolt & clamp design. Torx® SHCS fasteners on ring caps (6-40) x (4) per ring.
Protective Coatings	Alloy steel, bead blasted (AH) diameter, finished with black oxide to Mil-C-13924; Aluminum Alloy, bead blasted (AH) diameter, finished hard anodized to Type III per Mil-C-13924; Stainless Steel, bead blasted (AH) diameter, passivated to ASTM A 967 Type III.
Precision & Tolerance	Bore size held within +/- .0002 of nominal dimension. Base sectional height held within +/- .0005 of nominal dimension. Perpendicularity and parallelism between ring bore-line and base held within +/- .0002 of true position.
Cross-Bolt System	True square cross-bolt, full width base engagement, bolt width (.140), bolt depth (.095), 4140 HT alloy, 1/4-28 TPI (Class IIA), cold formed threads; Hexagon (7/16) nut drive, cold formed threads, 4140 HT alloy, bead blasted, finished with black oxide to Mil-C-13924; Stainless Steel models use 416 HT alloy on cross-bolt and hexagon nut with respective threads, bead blasted, passivated to ASTM A 967 Type III.

Alloy Steel	26mm Height (Low)	26mm Height (Medium)	26mm Height (High)	26mm Height (X-High)
SKU Number	30640	30641	30642	30665
Ring Height	"A" (.785) {19.9mm}	"A" (.985) {25mm}	"A" (1.185) {30mm}	"A" (1.400) {35.5mm}
Base Sectional Height	"B" (.273) {6.93mm}	"B" (.473) {12mm}	"B" (.673) {17mm}	"B" (.888) {22.5mm}
Overall Length	"C" (1.500) {38.1mm}	"C" (1.500) {38.1mm}	"C" (1.500) {38.1mm}	"C" (1.500) {38.1mm}
Bore Size	"D" (1.0241) {26mm}	"D" (1.0241) {26mm}	"D" (1.0241) {26mm}	"D" (1.0241) {26mm}
Overall Height	"E" (1.710) {43.4mm}	"E" (1.910) {48.5mm}	"E" (2.110) {53.6mm}	"E" (2.325) {59mm}
Weight	5.62 oz./pair	6.58 oz./pair	7.54 oz./pair	8.02 oz./pair

Aluminum (7075)	26mm Height (Low)	26mm Height (Medium)	26mm Height (High)	26mm Height (X-High)
SKU Number	30660	30661	30662	30666
Ring Height	"A" (.785) {19.9mm}	"A" (.985) {25mm}	"A" (1.185) {30mm}	"A" (1.400) {35.5mm}
Base Sectional Height	"B" (.273) {6.93mm}	"B" (.473) {12mm}	"B" (.673) {17mm}	"B" (.888) {22.5mm}
Overall Length	"C" (1.500) {38.1mm}	"C" (1.500) {38.1mm}	"C" (1.500) {38.1mm}	"C" (1.500) {38.1mm}
Bore Size	"D" (1.0241) {26mm}	"D" (1.0241) {26mm}	"D" (1.0241) {26mm}	"D" (1.0241) {26mm}
Overall Height	"E" (1.710) {43.4mm}	"E" (1.910) {48.5mm}	"E" (2.110) {53.6mm}	"E" (2.325) {59mm}
Weight	2.70 oz./pair	3.16 oz./pair	3.62 oz./pair	4.01 oz./pair

Stainless Steel	26mm Height (Low)	26mm Height (Medium)	26mm Height (High)	26mm Height (X-High)
SKU Number	30643	30644	30645	30667
Ring Height	"A" (.785) {19.9mm}	"A" (.985) {25mm}	"A" (1.185) {30mm}	"A" (1.400) {35.5mm}
Base Sectional Height	"B" (.273) {6.93mm}	"B" (.473) {12mm}	"B" (.673) {17mm}	"B" (.888) {22.5mm}
Overall Length	"C" (1.500) {38.1mm}	"C" (1.500) {38.1mm}	"C" (1.500) {38.1mm}	"C" (1.500) {38.1mm}
Bore Size	"D" (1.0241) {26mm}	"D" (1.0241) {26mm}	"D" (1.0241) {26mm}	"D" (1.0241) {26mm}
Overall Height	"E" (1.710) {43.4mm}	"E" (1.910) {48.5mm}	"E" (2.110) {53.6mm}	"E" (2.325) {59mm}
Weight	5.73 oz./pair	6.68 oz./pair	7.64 oz./pair	8.15 oz./pair



TSR-W

26MM



Tactical Precision Systems, Inc.

TSR "W" Series Technical Specifications

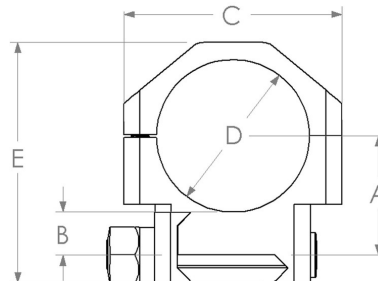
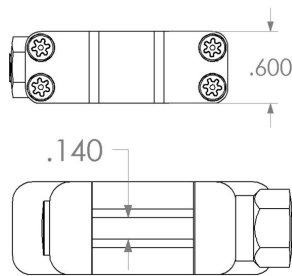
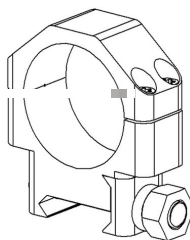
Product Highlights

Operating System	Scope Rings, Sniper, Tactical; Standardized Weaver® Rail platform.
Locking System	Slot and spline design, Weaver® style cross-slot configuration.
Hardware Features	Machined from solid billet. Bores of both base and cap of each scope ring is maintained within 2/10,000 of an inch cylindrical roundness. Ring bases are marked for easy identification of each height. Field and Armory replaceable cross-bolt & clamp design. Torx® SHCS fasteners on ring caps (6-40) x (4) per ring.
Protective Coatings	Alloy steel, bead blasted (AH) diameter, finished with black oxide to Mil-C-13924; Aluminum Alloy, bead blasted (AH) diameter, finished hard anodized to Type III per Mil-C-13924; Stainless Steel, bead blasted (AH) diameter, passivated to ASTM A 967 Type III.
Precision & Tolerance	Bore size held within +/- .0002 of nominal dimension. Base sectional height held within +/- .0005 of nominal dimension. Perpendicularity and parallelism between ring bore-line and base held within +/- .0002 of true position.
Cross-Bolt System	True square cross-bolt, full width base engagement, bolt width (.140), bolt depth (.095), 4140 HT alloy, 1/4-28 TPI (Class IIA), cold formed threads; Hexagon (7/16) nut drive, cold formed threads, 4140 HT alloy, bead blasted, finished with black oxide to Mil-C-13924; Stainless Steel models use 416 HT alloy on cross-bolt and hexagon nut with respective threads, bead blasted, passivated to ASTM A 967 Type III.

Alloy Steel	30mm Height (Low)	30mm Height (Medium)	30mm Height (High)	30mm Height (X-High)
SKU Number	30670	30671	30672	30685
Ring Height	"A" (.925) {23.5mm}	"A" (1.075) {27.3mm}	"A" (1.225) {31.1mm}	"A" (1.375) {34.9mm}
Base Sectional Height	"B" (.3342) {8.49mm}	"B" (.4842) {12.3mm}	"B" (.6342) {16.1mm}	"B" (.7842) {19.9mm}
Overall Length	"C" (1.685) {42.8mm}	"C" (1.685) {42.8mm}	"C" (1.685) {42.8mm}	"C" (1.685) {42.8mm}
Bore Size	"D" (1.1816) {30mm}	"D" (1.1816) {30mm}	"D" (1.1816) {30mm}	"D" (1.1816) {30mm}
Overall Height	"E" (1.885) {47.9mm}	"E" (2.035) {51.7mm}	"E" (2.185) {55.5mm}	"E" (2.335) {59.3mm}
Weight	6.37 oz./pair	7.08 oz./pair	7.79 oz./pair	8.64 oz./pair

Aluminum (7075)	30mm Height (Low)	30mm Height (Medium)	30mm Height (High)	30mm Height (X-High)
SKU Number	30680	30681	30682	30686
Ring Height	"A" (.925) {25.5mm}	"A" (1.075) {27.3mm}	"A" (1.225) {31.1mm}	"A" (1.375) {34.9mm}
Base Sectional Height	"B" (.3342) {8.49mm}	"B" (.4842) {12.3mm}	"B" (.6342) {16.1mm}	"B" (.7842) {19.9mm}
Overall Length	"C" (1.685) {42.8mm}	"C" (1.685) {42.8mm}	"C" (1.685) {42.8mm}	"C" (1.685) {42.8mm}
Bore Size	"D" (1.1816) {30mm}	"D" (1.1816) {30mm}	"D" (1.1816) {30mm}	"D" (1.1816) {30mm}
Overall Height	"E" (1.885) {47.9mm}	"E" (2.035) {51.7mm}	"E" (2.185) {55.5mm}	"E" (2.335) {59.3mm}
Weight	3.06 oz./pair	3.40 oz./pair	3.74 oz./pair	4.03 oz./pair

Stainless Steel	30mm Height (Low)	30mm Height (Medium)	30mm Height (High)	30mm Height (X-High)
SKU Number	30673	30674	30675	30687
Ring Height	"A" (.925) {25.5mm}	"A" (1.075) {27.3mm}	"A" (1.225) {31.1mm}	"A" (1.375) {34.9mm}
Base Sectional Height	"B" (.3342) {8.49mm}	"B" (.4842) {12.3mm}	"B" (.6342) {16.1mm}	"B" (.7842) {19.9mm}
Overall Length	"C" (1.685) {42.8mm}	"C" (1.685) {42.8mm}	"C" (1.685) {42.8mm}	"C" (1.685) {42.8mm}
Bore Size	"D" (1.1816) {30mm}	"D" (1.1816) {30mm}	"D" (1.1816) {30mm}	"D" (1.1816) {30mm}
Overall Height	"E" (1.885) {47.9mm}	"E" (2.035) {51.7mm}	"E" (2.185) {55.5mm}	"E" (2.335) {59.3mm}
Weight	6.39 oz./pair	7.17 oz./pair	7.83 oz./pair	8.73 oz./pair



TSR-W

30MM

HRT Series Technical Specifications

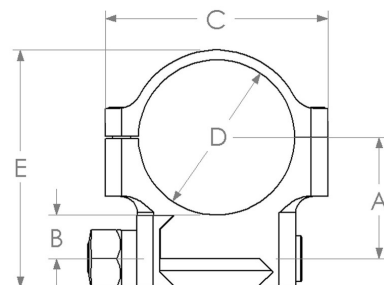
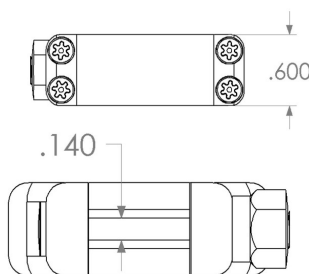
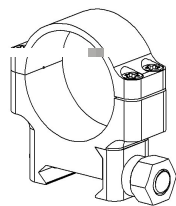
Product Highlights

Operating System	Scope Rings, Sniper, Tactical; Standardized Weaver® Rail platform.
Locking System	Slot and spline design, Weaver® style cross-slot configuration.
Hardware Features	Machined from solid billet. Bores of both base and cap of each scope ring is maintained within 2/10,000 of an inch cylindrical roundness. Ring bases are marked for easy identification of each height. Field and Armory replaceable cross-bolt & clamp design. Torx® SHCS fasteners on ring caps (6-40) x (4) per ring.
Protective Coatings	Alloy steel, bead blasted (AH) diameter, finished with black oxide to Mil-C-13924; Aluminum Alloy, bead blasted (AH) diameter, finished hard anodized to Type III per Mil-A-8624; Stainless Steel, bead blasted (AH) diameter, passivated to ASTM A 967 Type III.
Precision & Tolerance	Bore size held within +/- .0002 of nominal dimension. Base sectional height held within +/- .0005 of nominal dimension. Perpendicularity and parallelism between ring bore-line and base held within +/- .0002 of true position.
Cross-Bolt System	True square cross-bolt, full width base engagement, bolt width (.140), bolt depth (.095), 4140 HT alloy, 1/4-28 TPI (Class IIA), cold formed threads; Hexagon (7/16) nut drive, cold formed threads, 4140 HT alloy, bead blasted, finished with black oxide to Mil-C-13924; Stainless Steel models use 416 HT alloy on cross-bolt and hexagon nut with respective threads, bead blasted, passivated to ASTM A 967 Type III.

Alloy Steel	1-Inch Height (Low)	1-Inch Height (Medium)	1-Inch Height (High)	1-Inch Height (X-High)
SKU Number	40500	40501	40502	40525
Ring Height	"A" (.785) {19.9mm}	"A" (.985) {25mm}	"A" (1.185) {30mm}	"A" (1.400) {35.5mm}
Base Sectional Height	"B" (.285) {7.23mm}	"B" (.485) {12.3mm}	"B" (.685) {17.4mm}	"B" (.900) {22.8mm}
Overall Length	"C" (1.500) {38.1mm}	"C" (1.500) {38.1mm}	"C" (1.500) {38.1mm}	"C" (1.500) {38.1mm}
Bore Size	"D" (1.0005) {25.4mm}	"D" (1.0005) {25.4mm}	"D" (1.0005) {25.4mm}	"D" (1.0005) {25.4mm}
Overall Height	"E" (1.585) {40.3mm}	"E" (1.785) {45.3mm}	"E" (1.985) {50.4mm}	"E" (2.200) {55.9mm}
Weight	5.25 oz./pair	6.21 oz./pair	7.17 oz./pair	7.74 oz./pair

Aluminum (7075)	1-Inch Height (Low)	1-Inch Height (Medium)	1-Inch Height (High)	1-Inch Height (X-High)
SKU Number	40520	40521	40522	40526
Ring Height	"A" (.785) {19.9mm}	"A" (.985) {25mm}	"A" (1.185) {30mm}	"A" (1.400) {35.5mm}
Base Sectional Height	"B" (.285) {7.23mm}	"B" (.485) {12.3mm}	"B" (.685) {17.4mm}	"B" (.900) {22.8mm}
Overall Length	"C" (1.500) {38.1mm}	"C" (1.500) {38.1mm}	"C" (1.500) {38.1mm}	"C" (1.500) {38.1mm}
Bore Size	"D" (1.0005) {25.4mm}	"D" (1.0005) {25.4mm}	"D" (1.0005) {25.4mm}	"D" (1.0005) {25.4mm}
Overall Height	"E" (1.585) {40.3mm}	"E" (1.785) {45.3mm}	"E" (1.985) {50.4mm}	"E" (2.200) {55.9mm}
Weight	2.72 oz./pair	3.18 oz./pair	3.64 oz./pair	4.72 oz./pair

Stainless Steel	1-Inch Height (Low)	1-Inch Height (Medium)	1-Inch Height (High)	1-Inch Height (X-High)
SKU Number	40503	40504	40505	40527
Ring Height	"A" (.785) {19.9mm}	"A" (.985) {25mm}	"A" (1.185) {30mm}	"A" (1.400) {35.5mm}
Base Sectional Height	"B" (.285) {7.23mm}	"B" (.485) {12.3mm}	"B" (.685) {17.4mm}	"B" (.900) {22.8mm}
Overall Length	"C" (1.500) {38.1mm}	"C" (1.500) {38.1mm}	"C" (1.500) {38.1mm}	"C" (1.500) {38.1mm}
Bore Size	"D" (1.0005) {25.4mm}	"D" (1.0005) {25.4mm}	"D" (1.0005) {25.4mm}	"D" (1.0005) {25.4mm}
Overall Height	"E" (1.585) {40.3mm}	"E" (1.785) {45.3mm}	"E" (1.985) {50.4mm}	"E" (2.200) {55.9mm}
Weight	5.26 oz./pair	6.23 oz./pair	7.19 oz./pair	7.77 oz./pair



HRT

1-INCH

HRT Series Technical Specifications

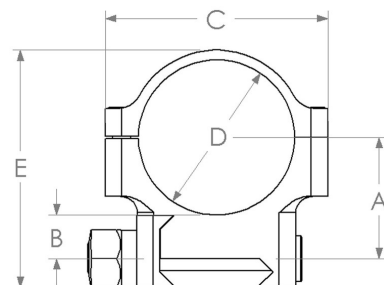
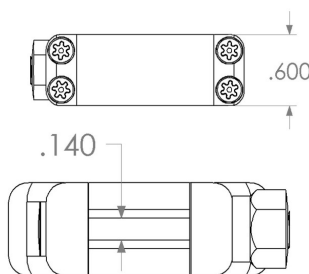
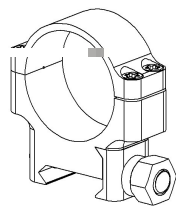
Product Highlights

Operating System	Scope Rings, Sniper, Tactical; Standardized Weaver® Rail platform.
Locking System	Slot and spline design, Weaver® style cross-slot configuration.
Hardware Features	Machined from solid billet. Bores of both base and cap of each scope ring is maintained within 2/10,000 of an inch cylindrical roundness. Ring bases are marked for easy identification of each height. Field and Armory replaceable cross-bolt & clamp design. Torx® SHCS fasteners on ring caps (6-40) x (4) per ring.
Protective Coatings	Alloy steel, bead blasted (AH) diameter, finished with black oxide to Mil-C-13924; Aluminum Alloy, bead blasted (AH) diameter, finished hard anodized to Type III per Mil-A-8624; Stainless Steel, bead blasted (AH) diameter, passivated to ASTM A 967 Type III.
Precision & Tolerance	Bore size held within +/- .0002 of nominal dimension. Base sectional height held within +/- .0005 of nominal dimension. Perpendicularity and parallelism between ring bore-line and base held within +/- .0002 of true position.
Cross-Bolt System	True square cross-bolt, full width base engagement, bolt width (.140), bolt depth (.095), 4140 HT alloy, 1/4-28 TPI (Class IIA), cold formed threads; Hexagon (7/16) nut drive, cold formed threads, 4140 HT alloy, bead blasted, finished with black oxide to Mil-C-13924; Stainless Steel models use 416 HT alloy on cross-bolt and hexagon nut with respective threads, bead blasted, passivated to ASTM A 967 Type III.

Alloy Steel	26mm Height (Low)	26mm Height (Medium)	26mm Height (High)	26mm Height (X-High)
SKU Number	40540	40541	40542	40565
Ring Height	"A" (.785) {19.9mm}	"A" (.985) {25mm}	"A" (1.185) {30mm}	"A" (1.400) {35.5mm}
Base Sectional Height	"B" (.273) {6.93mm}	"B" (.473) {12mm}	"B" (.673) {17mm}	"B" (.888) {22.5mm}
Overall Length	"C" (1.500) {38.1mm}	"C" (1.500) {38.1mm}	"C" (1.500) {38.1mm}	"C" (1.500) {38.1mm}
Bore Size	"D" (1.0241) {26mm}	"D" (1.0241) {26mm}	"D" (1.0241) {26mm}	"D" (1.0241) {26mm}
Overall Height	"E" (1.710) {43.4mm}	"E" (1.910) {48.5mm}	"E" (2.110) {53.6mm}	"E" (2.325) {59mm}
Weight	5.24 oz./pair	6.20 oz./pair	7.16 oz./pair	7.73 oz./pair

Aluminum (7075)	26mm Height (Low)	26mm Height (Medium)	26mm Height (High)	26mm Height (X-High)
SKU Number	40560	40561	40562	40566
Ring Height	"A" (.785) {19.9mm}	"A" (.985) {25mm}	"A" (1.185) {30mm}	"A" (1.400) {35.5mm}
Base Sectional Height	"B" (.273) {6.93mm}	"B" (.473) {12mm}	"B" (.673) {17mm}	"B" (.888) {22.5mm}
Overall Length	"C" (1.500) {38.1mm}	"C" (1.500) {38.1mm}	"C" (1.500) {38.1mm}	"C" (1.500) {38.1mm}
Bore Size	"D" (1.0241) {26mm}	"D" (1.0241) {26mm}	"D" (1.0241) {26mm}	"D" (1.0241) {26mm}
Overall Height	"E" (1.710) {43.4mm}	"E" (1.910) {48.5mm}	"E" (2.110) {53.6mm}	"E" (2.325) {59mm}
Weight	2.71 oz./pair	3.17 oz./pair	3.63 oz./pair	4.71 oz./pair

Stainless Steel	26mm Height (Low)	26mm Height (Medium)	26mm Height (High)	26mm Height (X-High)
SKU Number	40543	40544	40545	40567
Ring Height	"A" (.785) {19.9mm}	"A" (.985) {25mm}	"A" (1.185) {30mm}	"A" (1.400) {35.5mm}
Base Sectional Height	"B" (.273) {6.93mm}	"B" (.473) {12mm}	"B" (.673) {17mm}	"B" (.888) {22.5mm}
Overall Length	"C" (1.500) {38.1mm}	"C" (1.500) {38.1mm}	"C" (1.500) {38.1mm}	"C" (1.500) {38.1mm}
Bore Size	"D" (1.0241) {26mm}	"D" (1.0241) {26mm}	"D" (1.0241) {26mm}	"D" (1.0241) {26mm}
Overall Height	"E" (1.710) {43.4mm}	"E" (1.910) {48.5mm}	"E" (2.110) {53.6mm}	"E" (2.325) {59mm}
Weight	5.25 oz./pair	6.22 oz./pair	7.18 oz./pair	7.76 oz./pair



HRT

26MM



Tactical Precision Systems, Inc.

HRT Series Technical Specifications

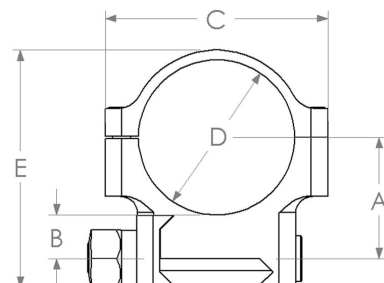
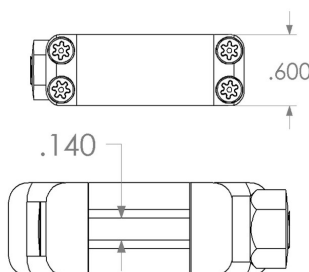
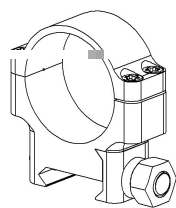
Product Highlights

Operating System	Scope Rings, Sniper, Tactical; Standardized Weaver® Rail platform.
Locking System	Slot and spline design, Weaver® style cross-slot configuration.
Hardware Features	Machined from solid billet. Bores of both base and cap of each scope ring is maintained within 2/10,000 of an inch cylindrical roundness. Ring bases are marked for easy identification of each height. Field and Armory replaceable cross-bolt & clamp design. Torx® SHCS fasteners on ring caps (6-40) x (4) per ring.
Protective Coatings	Alloy steel, bead blasted (AH) diameter, finished with black oxide to Mil-C-13924; Aluminum Alloy, bead blasted (AH) diameter, finished hard anodized to Type III per Mil-C-13924; Stainless Steel, bead blasted (AH) diameter, passivated to ASTM A 967 Type III.
Precision & Tolerance	Bore size held within +/- .0002 of nominal dimension. Base sectional height held within +/- .0005 of nominal dimension. Perpendicularity and parallelism between ring bore-line and base held within +/- .0002 of true position.
Cross-Bolt System	True square cross-bolt, full width base engagement, bolt width (.140), bolt depth (.095), 4140 HT alloy, 1/4-28 TPI (Class IIA), cold formed threads; Hexagon (7/16) nut drive, cold formed threads, 4140 HT alloy, bead blasted, finished with black oxide to Mil-C-13924; Stainless Steel models use 416 HT alloy on cross-bolt and hexagon nut with respective threads, bead blasted, passivated to ASTM A 967 Type III.

Alloy Steel	30mm Height (Low)	30mm Height (Medium)	30mm Height (High)	30mm Height (X-High)
SKU Number	40570	40571	40572	40585
Ring Height	"A" (.925) {23.5mm}	"A" (1.075) {27.3mm}	"A" (1.225) {31.1mm}	"A" (1.375) {34.9mm}
Base Sectional Height	"B" (.3342) {8.49mm}	"B" (.4842) {12.3mm}	"B" (.6342) {16.1mm}	"B" (.7842) {19.9mm}
Overall Length	"C" (1.685) {42.8mm}	"C" (1.685) {42.8mm}	"C" (1.685) {42.8mm}	"C" (1.685) {42.8mm}
Bore Size	"D" (1.1816) {30mm}	"D" (1.1816) {30mm}	"D" (1.1816) {30mm}	"D" (1.1816) {30mm}
Overall Height	"E" (1.835) {46.6mm}	"E" (1.985) {50.4mm}	"E" (2.135) {54.2mm}	"E" (2.285) {58mm}
Weight	5.87 oz./pair	6.58 oz./pair	7.29 oz./pair	8.14 oz./pair

Aluminum (7075)	30mm Height (Low)	30mm Height (Medium)	30mm Height (High)	30mm Height (X-High)
SKU Number	40580	40581	40582	40586
Ring Height	"A" (.925) {25.5mm}	"A" (1.075) {27.3mm}	"A" (1.225) {31.1mm}	"A" (1.375) {34.9mm}
Base Sectional Height	"B" (.3342) {8.49mm}	"B" (.4842) {12.3mm}	"B" (.6342) {16.1mm}	"B" (.7842) {19.9mm}
Overall Length	"C" (1.685) {42.8mm}	"C" (1.685) {42.8mm}	"C" (1.685) {42.8mm}	"C" (1.685) {42.8mm}
Bore Size	"D" (1.1816) {30mm}	"D" (1.1816) {30mm}	"D" (1.1816) {30mm}	"D" (1.1816) {30mm}
Overall Height	"E" (1.835) {46.6mm}	"E" (1.985) {50.4mm}	"E" (2.135) {54.2mm}	"E" (2.285) {58mm}
Weight	2.81 oz./pair	3.15 oz./pair	3.49 oz./pair	3.78 oz./pair

Stainless Steel	30mm Height (Low)	30mm Height (Medium)	30mm Height (High)	30mm Height (X-High)
SKU Number	40573	40574	40575	40587
Ring Height	"A" (.925) {25.5mm}	"A" (1.075) {27.3mm}	"A" (1.225) {31.1mm}	"A" (1.375) {34.9mm}
Base Sectional Height	"B" (.3342) {8.49mm}	"B" (.4842) {12.3mm}	"B" (.6342) {16.1mm}	"B" (.7842) {19.9mm}
Overall Length	"C" (1.685) {42.8mm}	"C" (1.685) {42.8mm}	"C" (1.685) {42.8mm}	"C" (1.685) {42.8mm}
Bore Size	"D" (1.1816) {30mm}	"D" (1.1816) {30mm}	"D" (1.1816) {30mm}	"D" (1.1816) {30mm}
Overall Height	"E" (1.835) {46.6mm}	"E" (1.985) {50.4mm}	"E" (2.135) {54.2mm}	"E" (2.285) {58mm}
Weight	5.89 oz./pair	6.67 oz./pair	7.33 oz./pair	8.23 oz./pair



HRT

30MM