

# TSR Series Technical Specifications

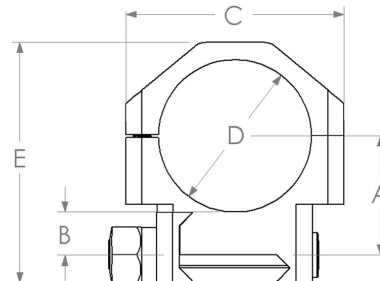
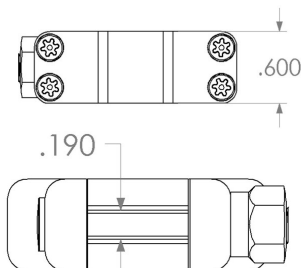
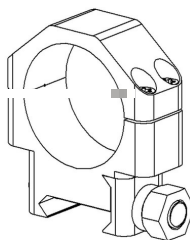
## Product Highlights

Operating System	Scope Rings, Sniper, Tactical; Standardized Picatinny Rail (Mil-STD 1913) platform.
Locking System	Slot and spline design, Picatinny (Mil-STD 1913) configuration.
Hardware Features	Machined from solid billet. Bores of both base and cap of each scope ring is maintained within 2/10,000 of an inch cylindrical roundness. Ring bases are marked for easy identification of each height. Field and Armory replaceable cross-bolt & clamp design. Torx® SHCS fasteners on ring caps (6-40) x (4) per ring.
Protective Coatings	Alloy steel, bead blasted (AH) diameter, finished with black oxide to Mil-C-13924; Aluminum Alloy, bead blasted (AH) diameter, finished hard anodized to Type III per Mil-A-8624; Stainless Steel, bead blasted (AH) diameter, passivated to ASTM A 967 Type III.
Precision & Tolerance	Bore size held within +/- .0002 of nominal dimension. Base sectional height held within +/- .0005 of nominal dimension. Perpendicularity and parallelism between ring bore-line and base held within +/- .0002 of true position.
Cross-Bolt System	True square cross-bolt, full width base engagement, bolt width (.190), bolt depth (.120), 4140 HT alloy, 1/4-28 TPI (Class IIA), cold formed threads; Hexagon (7/16) nut drive, cold formed threads, 4140 HT alloy, bead blasted, finished with black oxide to Mil-C-13924; Stainless Steel models use 416 HT alloy on cross-bolt and hexagon nut with respective threads, bead blasted, passivated to ASTM A 967 Type III.

<b>Alloy Steel</b>	26mm Height (Low)	26mm Height (Medium)	26mm Height (High)	26mm Height (X-High)
SKU Number	30540	30541	30542	30565
Ring Height	"A" (.785) {19.9mm}	"A" (.985) {25mm}	"A" (1.185) {30mm}	"A" (1.400) {35.5mm}
Base Sectional Height	"B" (.273) {6.93mm}	"B" (.473) {12mm}	"B" (.673) {17mm}	"B" (.888) {22.5mm}
Overall Length	"C" (1.500) {38.1mm}	"C" (1.500) {38.1mm}	"C" (1.500) {38.1mm}	"C" (1.500) {38.1mm}
Bore Size	"D" (1.0241) {26mm}	"D" (1.0241) {26mm}	"D" (1.0241) {26mm}	"D" (1.0241) {26mm}
Overall Height	"E" (1.710) {43.4mm}	"E" (1.910) {48.5mm}	"E" (2.110) {53.6mm}	"E" (2.325) {59mm}
Weight	5.62 oz./pair	6.58 oz./pair	7.54 oz./pair	8.02 oz./pair

<b>Aluminum (7075)</b>	26mm Height (Low)	26mm Height (Medium)	26mm Height (High)	26mm Height (X-High)
SKU Number	30560	30561	30562	30566
Ring Height	"A" (.785) {19.9mm}	"A" (.985) {25mm}	"A" (1.185) {30mm}	"A" (1.400) {35.5mm}
Base Sectional Height	"B" (.273) {6.93mm}	"B" (.473) {12mm}	"B" (.673) {17mm}	"B" (.888) {22.5mm}
Overall Length	"C" (1.500) {38.1mm}	"C" (1.500) {38.1mm}	"C" (1.500) {38.1mm}	"C" (1.500) {38.1mm}
Bore Size	"D" (1.0241) {26mm}	"D" (1.0241) {26mm}	"D" (1.0241) {26mm}	"D" (1.0241) {26mm}
Overall Height	"E" (1.710) {43.4mm}	"E" (1.910) {48.5mm}	"E" (2.110) {53.6mm}	"E" (2.325) {59mm}
Weight	2.70 oz./pair	3.16 oz./pair	3.62 oz./pair	4.01 oz./pair

<b>Stainless Steel</b>	26mm Height (Low)	26mm Height (Medium)	26mm Height (High)	26mm Height (X-High)
SKU Number	30543	30544	30545	30567
Ring Height	"A" (.785) {19.9mm}	"A" (.985) {25mm}	"A" (1.185) {30mm}	"A" (1.400) {35.5mm}
Base Sectional Height	"B" (.273) {6.93mm}	"B" (.473) {12mm}	"B" (.673) {17mm}	"B" (.888) {22.5mm}
Overall Length	"C" (1.500) {38.1mm}	"C" (1.500) {38.1mm}	"C" (1.500) {38.1mm}	"C" (1.500) {38.1mm}
Bore Size	"D" (1.0241) {26mm}	"D" (1.0241) {26mm}	"D" (1.0241) {26mm}	"D" (1.0241) {26mm}
Overall Height	"E" (1.710) {43.4mm}	"E" (1.910) {48.5mm}	"E" (2.110) {53.6mm}	"E" (2.325) {59mm}
Weight	5.73 oz./pair	6.68 oz./pair	7.64 oz./pair	8.15 oz./pair



TSR

26MM