

TSR Series Technical Specifications

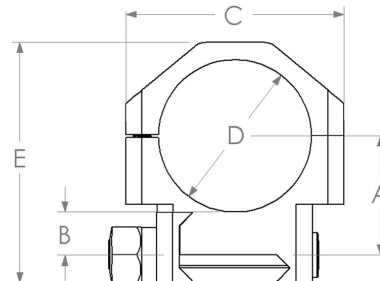
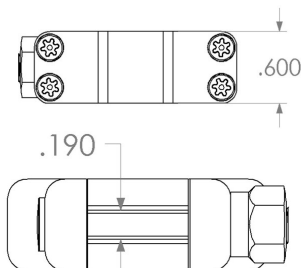
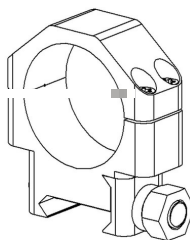
Product Highlights

Operating System	Scope Rings, Sniper, Tactical; Standardized Picatinny Rail (Mil-STD 1913) platform.
Locking System	Slot and spline design, Picatinny (Mil-STD 1913) configuration.
Hardware Features	Machined from solid billet. Bores of both base and cap of each scope ring is maintained within 2/10,000 of an inch cylindrical roundness. Ring bases are marked for easy identification of each height. Field and Armory replaceable cross-bolt & clamp design. Torx® SHCS fasteners on ring caps (6-40) x (4) per ring.
Protective Coatings	Alloy steel, bead blasted (AH) diameter, finished with black oxide to Mil-C-13924; Aluminum Alloy, bead blasted (AH) diameter, finished hard anodized to Type III per Mil-A-8624; Stainless Steel, bead blasted (AH) diameter, passivated to ASTM A 967 Type III.
Precision & Tolerance	Bore size held within +/- .0002 of nominal dimension. Base sectional height held within +/- .0005 of nominal dimension. Perpendicularity and parallelism between ring bore-line and base held within +/- .0002 of true position.
Cross-Bolt System	True square cross-bolt, full width base engagement, bolt width (.190), bolt depth (.120), 4140 HT alloy, 1/4-28 TPI (Class IIA), cold formed threads; Hexagon (7/16) nut drive, cold formed threads, 4140 HT alloy, bead blasted, finished with black oxide to Mil-C-13924; Stainless Steel models use 416 HT alloy on cross-bolt and hexagon nut with respective threads, bead blasted, passivated to ASTM A 967 Type III.

Alloy Steel	30mm Height (Low)	30mm Height (Medium)	30mm Height (High)	30mm Height (X-High)
SKU Number	30570	30571	30572	30585
Ring Height	"A" (.925) {23.5mm}	"A" (1.075) {27.3mm}	"A" (1.225) {31.1mm}	"A" (1.375) {34.9mm}
Base Sectional Height	"B" (.3342) {8.49mm}	"B" (.4842) {12.3mm}	"B" (.6342) {16.1mm}	"B" (.7842) {19.9mm}
Overall Length	"C" (1.685) {42.8mm}	"C" (1.685) {42.8mm}	"C" (1.685) {42.8mm}	"C" (1.685) {42.8mm}
Bore Size	"D" (1.1816) {30mm}	"D" (1.1816) {30mm}	"D" (1.1816) {30mm}	"D" (1.1816) {30mm}
Overall Height	"E" (1.885) {47.9mm}	"E" (2.035) {51.7mm}	"E" (2.185) {55.5mm}	"E" (2.335) {59.3mm}
Weight	6.37 oz./pair	7.08 oz./pair	7.79 oz./pair	8.64 oz./pair

Aluminum (7075)	30mm Height (Low)	30mm Height (Medium)	30mm Height (High)	30mm Height (X-High)
SKU Number	30580	30581	30582	30586
Ring Height	"A" (.925) {25.5mm}	"A" (1.075) {27.3mm}	"A" (1.225) {31.1mm}	"A" (1.375) {34.9mm}
Base Sectional Height	"B" (.3342) {8.49mm}	"B" (.4842) {12.3mm}	"B" (.6342) {16.1mm}	"B" (.7842) {19.9mm}
Overall Length	"C" (1.685) {42.8mm}	"C" (1.685) {42.8mm}	"C" (1.685) {42.8mm}	"C" (1.685) {42.8mm}
Bore Size	"D" (1.1816) {30mm}	"D" (1.1816) {30mm}	"D" (1.1816) {30mm}	"D" (1.1816) {30mm}
Overall Height	"E" (1.885) {47.9mm}	"E" (2.035) {51.7mm}	"E" (2.185) {55.5mm}	"E" (2.335) {59.3mm}
Weight	3.06 oz./pair	3.40 oz./pair	3.74 oz./pair	4.03 oz./pair

Stainless Steel	30mm Height (Low)	30mm Height (Medium)	30mm Height (High)	30mm Height (X-High)
SKU Number	30573	30574	30575	30587
Ring Height	"A" (.925) {25.5mm}	"A" (1.075) {27.3mm}	"A" (1.225) {31.1mm}	"A" (1.375) {34.9mm}
Base Sectional Height	"B" (.3342) {8.49mm}	"B" (.4842) {12.3mm}	"B" (.6342) {16.1mm}	"B" (.7842) {19.9mm}
Overall Length	"C" (1.685) {42.8mm}	"C" (1.685) {42.8mm}	"C" (1.685) {42.8mm}	"C" (1.685) {42.8mm}
Bore Size	"D" (1.1816) {30mm}	"D" (1.1816) {30mm}	"D" (1.1816) {30mm}	"D" (1.1816) {30mm}
Overall Height	"E" (1.885) {47.9mm}	"E" (2.035) {51.7mm}	"E" (2.185) {55.5mm}	"E" (2.335) {59.3mm}
Weight	6.39 oz./pair	7.17 oz./pair	7.83 oz./pair	8.73 oz./pair



TSR

30MM